

DNA Reactivity Dose Response Curves Using the Acellular Comet Assay

Marie Vasquez, Nicole Dewhurst, and Carrie Siviers
Helix3 Inc., Morrisville, North Carolina

ABSTRACT

The high occurrence of positive results in the current battery of *in vitro* genotoxicity tests and their poor concordance with *in vivo* carcinogenicity results have been a significant source of concern in safety testing. Among the suspected causes of the high frequency of positive *in vitro* results are a dependency of most assays on cellular division and the confounding effects of cytotoxicity, repair, cell line differences and multiple modes of action. To supplement the specificity of *in vitro* testing and minimize the consequentially required *in vivo* tests, the acellular comet assay can be used to provide DNA reactivity dose response curve data using minimal test compound, time and expense. More sensitive and specific than the classic *in vitro* comet assay, the acellular comet assay avoids those factors that confound live cell assays while providing a fast method for determining DNA reactivity and elucidating the possible mode of action (MoA) of a test compound. To demonstrate how the acellular comet assay may be used effectively, we present DNA reactivity dose response curves generated for multiple compounds each with a different mode of action and/or genotoxicity profile.

INTRODUCTION

Although industries depend heavily on *in vitro* genotoxicity tests for the screening and safety assessment of most chemicals, the high "false positive" rate of these assays is of great concern where decisions must be made with minimal or no *in vivo* follow up testing (1-6). Examples of *in vitro*-specific conditions that can contribute to the poor specificity or sensitivity of an assay are:

- (a) Cell division
- (b) Cytotoxicity
- (c) DNA repair
- (d) Cell line differences
- (e) Mode of Action (MoA)

So to supplement existing genotoxicity tests, the ideal test would be able to determine the DNA reactivity of a test compound in the absence of the above listed factors. This could help to identify compounds that may have a MoA that would result in a no-effect-concentration (NOEC) for the reasons described below.

- (i) The compound exerts its genotoxic effect via primary damage to a non-DNA target
- (ii) The compound, its metabolites or degradation products induce direct DNA damage, but only at toxic concentrations and/or concentrations above a defined threshold that is not reached *in vivo* or in humans.
- (iii) The compound induces damage by a process that is specific to the *in vitro* test system or conditions that will never occur *in vivo* or in humans

The acellular assay provides a fast and highly sensitive method for determining the DNA reactivity of test compounds by eliminating those cellular processes and requirements that limit the sensitivity and/or specificity of other *in vitro* genotoxicity tests. By directly exposing wild type human DNA—rather than live cells—to as many as 15-20 dose concentrations (nm to M) and in up to 5 independent experiments, our protocol can evaluate the DNA reactivity of test compounds, their metabolites and even degradation products at concentrations and under conditions more relevant to human exposure (7). And unlike standard *in vitro* assays, the multiple independent acellular comet experiments can all be conducted and analyzed within no more than 2 weeks thus providing informative DNA reactivity data with the use of only nominal amounts of chemical and time.

METHODS & MATERIALS

Test System

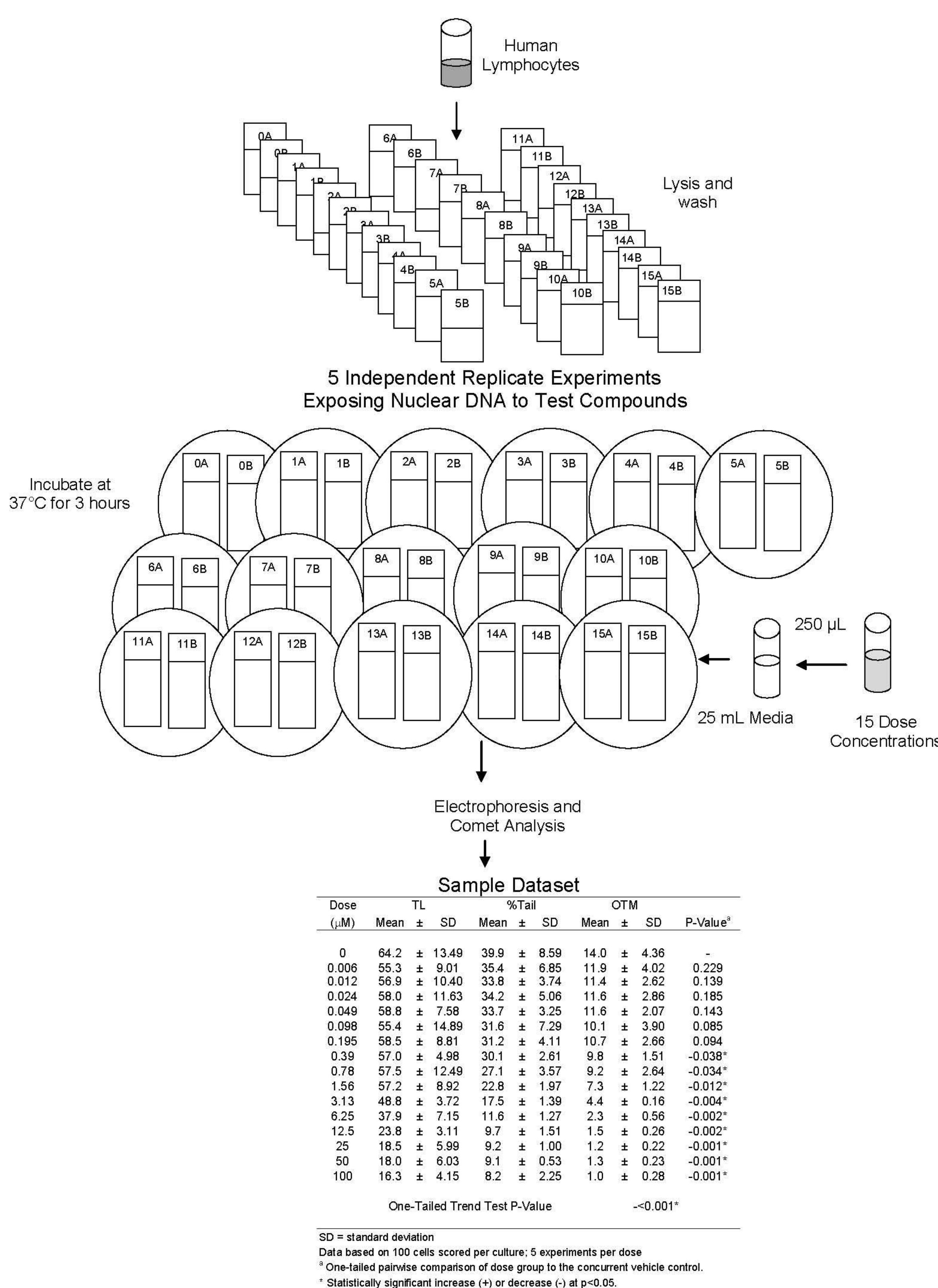
Whole blood was collected by venipuncture from a normal healthy non-smoking female volunteer. The whole blood was mixed sodium heparin anticoagulant. Immediately after collection, lymphocytes were isolated from the whole blood using Histopaque®1077 (Sigma). The untreated lymphocytes were mixed with mincing buffer (Mg⁺⁺ and Ca⁺⁺ free Hanks Balanced Salt Solution, 10% v/v DMSO and 20 mM Na₂EDTA, pH 7.4-7.7) at a 1x10⁶ mg/mL concentration before being flash frozen in liquid nitrogen and stored at -80±10°C for no more than 1 week before use.

Test Compounds

With the exception of ethyl methanesulfonate, all of the test compounds were obtained from Sigma Aldrich (St. Louis, MO). They were selected for evaluation as they are all clinically used chemotherapeutic drugs with different modes of action.

Acellular Comet Assay

Comet slides were prepared from the frozen human lymphocytes and lysed. After lysis, duplicate slides of nuclear DNA were exposed to 15 dose concentrations of each compound in 5 independent experiments.



METHODS & MATERIALS (CONT.)

Acellular Assay (Cont.)

Immediately after exposure, slides were exposed to alkali electrophoresis buffer (300 mM NaOH, 1 mM Na₂EDTA; pH>13) for 20 minutes to unwind or denature the DNA. After unwinding, the slides were electrophoresed for 40 minutes at 0.7V/cm, 300±10 mA and 4°C, neutralized, and allowed to air dry. Air dried slides were stained with SYBR Gold™ stain (Molecular Probes) and 100 cells per dose (50 cells per slide) were scored using the Komet® GLP Image Analysis System. All slides were scored without knowledge of their identity. To provide statistical strength and comparability to *in vivo* comet assay data, the culture or dish (i.e. dose) in each independent experiment was treated as the unit of exposure. For statistical analysis, the experiment cultures of the same dose were then combined to form "dose groups" with a minimum n of 5 per dose group. Statistical analysis with Analyze-It Version 2.21 (Analyze-It Software, Leeds, UK) was conducted on the extent of DNA migration as determined by the OTM and according to the recommendations by Vasquez et al. (2009) for detecting an increase or decrease.

RESULTS

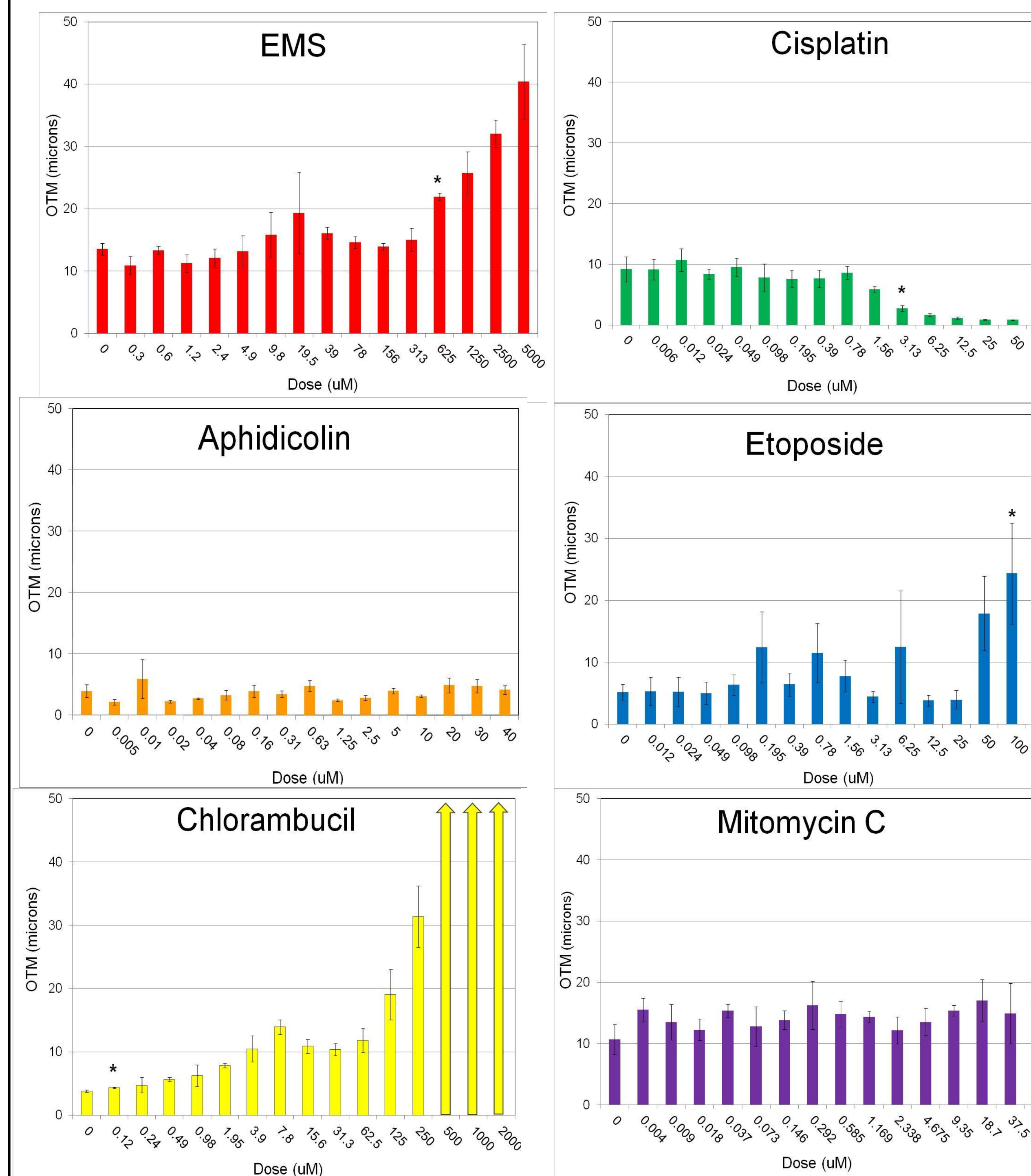


Figure 1. DNA reactivity dose response curves generated from 5 independent experiments per test compound: In the absence of any cellular proteins or functional capabilities, (a) EMS induced a dose response increase in DNA migration; (b) cisplatin induced a dose response decrease in DNA migration; (c) aphidicolin did not induce any detectable effect in DNA migration; (d) etoposide induced a dose response increase in DNA migration, but with consistently high variability indicative of opposing mechanistic influences; (e) Chlorambucil induced a dose response increase in DNA migration with damage so extreme at doses ≥500 µM that the comets were unscorable; and (f) mitomycin C did not induce a significant dose-related effect on DNA migration.

RESULTS (CONT.)

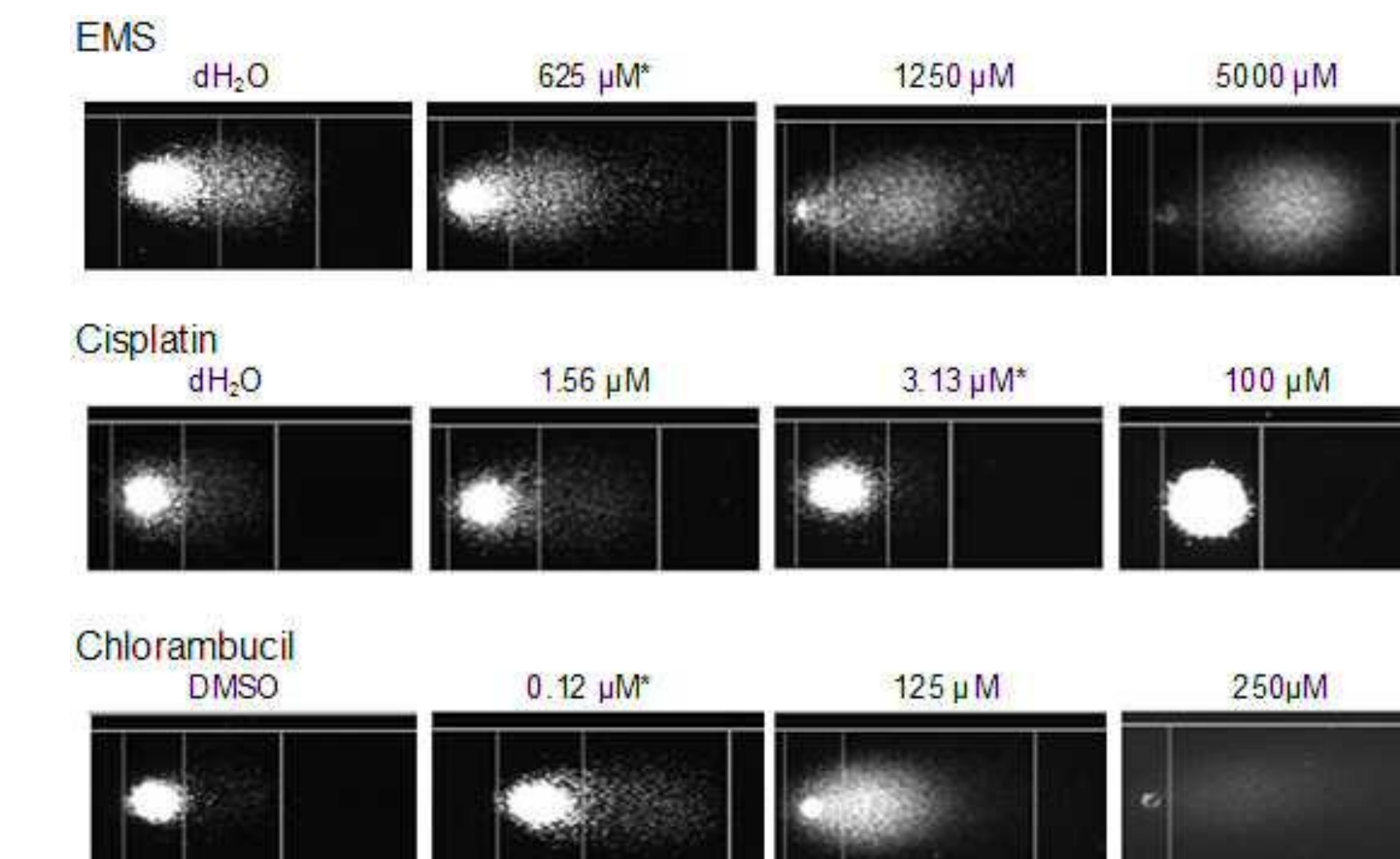


Fig. 2: Comet images captured with the Komet® GLP Image Analysis System provide visualization of the various comet shapes as they relate to the detection of strand breaks/alkali-labile sites (EMS and Chlorambucil) or crosslinks (Cisplatin).
Note: Despite claims that comets resembling "hedghegogs" (1250 and 5000 µM EMS) or "ghosts" (250µM Chlorambucil) are indicators of apoptosis or necrosis, these comets are exclusively due to genotoxicity as detected by the acellular comet assay. * =LOEL.

As expected, EMS and cisplatin directly interacted with DNA to induce alkali labile sites or DNA-DNA crosslinks. Also expected, the repair inhibitor Aphidicolin did not show any sign of direct DNA reactivity. Surprisingly, the topoisomerase II inhibitor Etoposide appeared to directly interact with DNA in the absence of cell division or metabolism. However, high inter-and intra-variability appears to indicate the presence of opposing mechanistic influences on DNA migration. Also a surprise, Chlorambucil induced extremely high levels of DNA strand breaks with no indication of inducing crosslinks. And MMC did not appear to directly interact with DNA.

CONCLUSIONS

Our data demonstrate that the acellular comet assay can provide additional information about the DNA reactivity of test compounds across a wide range of dose concentrations. Although this assay is limited and cannot be used to detect all forms of genotoxicity (e.g. aneuploidy), it may be used to detect early or previously undetected events such as crosslink induction or DNA strand breaks that can eventually lead to cell cycle inhibition and apoptosis or mutations. Since the acellular assay does not require the maintenance of live cells in culture, exposures can also be designed to more closely mimic *in vivo* exposure conditions where cells can be exposed to dose suspensions in methyl cellulose (versus DMSO) or to multiple metabolites or degradation products in the circulating blood plasma. This infinite flexibility combined with the sensitivity of comet provides a powerful investigative tool for understanding more about the mode of actions of many compounds. With it, we may have the ability to determine with greater confidence the true nature of "false positive" findings and better characterize what may be considered "well-characterized" compounds.

REFERENCES

- Kirkland, D., M. Aardema, L. Henderson, L. Müller (2005) Evaluation of the ability of a battery of 3 *in vitro* genotoxicity tests to discriminate rodent carcinogens and non-carcinogens. I. Sensitivity, specificity and relative predictivity. *Mutat. Res.* 584: 1-256.
- Jacobson-Kram, D. and A. Jacobs (2005) Use of genotoxicity data to support clinical trials or positive genotoxic findings on a candidate pharmaceutical or impurity...now what? *Int J Journal of Toxicology* 24: 129-134.
- COM (Committee on Mutagenicity of Chemicals in Food, Consumer Products and the Environment), COM guidance on strategy for testing of chemicals for mutagenicity, United Kingdom, December 2000.
- Kirkland D., S. Pfluhler, D. Tweats, M. Aardema, R. Corvi, F. Darroudi, A. Elhajjoui, H. Glatt, P. Hastwell, M. Hayashi, P. Kasper, S. Kirchner, A. Lynch, D. Marzin, D. Maurici, J.R. Meunier, L. Müller, G. Nohynek, J. Parry, E. Parry, V. Thybaud, R. Tice, J. fan Benhenn, P. Vanparys, P. White (2007) How to reduce false positive results when undertaking *in vitro* genotoxicity testing and thus avoid unnecessary follow-up animal tests. Report of an ECVAM Workshop. *Mutat Res.* 626(1): 31-55.
- Kirkland D., M. Aardema, N. Banduhn, P. Carmichael, R. Fautz, J.-R. Meunier, S. Pfluhler (2007) *In vitro* approaches to develop weight of evidence (WoE) and mode of action (MoA) discussions with positive *in vitro* genotoxicity results. *Mutagenesis* doi:10.1093/mutage/gem006.
- Kirkland D., P. Kasper, L. Müller, R. Corvi, G. Speit (2008) Recommended lists of genotoxic and non-genotoxic chemicals for assessment of the performance of new or improved genotoxicity tests: A follow-up to an ECVAM workshop. *Mutat. Res.* 653: 99-108.
- Dewhurst N. and M.Z. Vasquez (2008) Interpreting data from *in vitro* genotoxicity testing using the acellular comet assay. *Environ Mol Mutagenesis* 49(7) 576.
- Lavin, J.M. and P.R. Cook (1981) Conformational changes induced by salt in complexes of histones and superhelical nuclear DNA. *J. Cell Sci.* 50: 199-208.